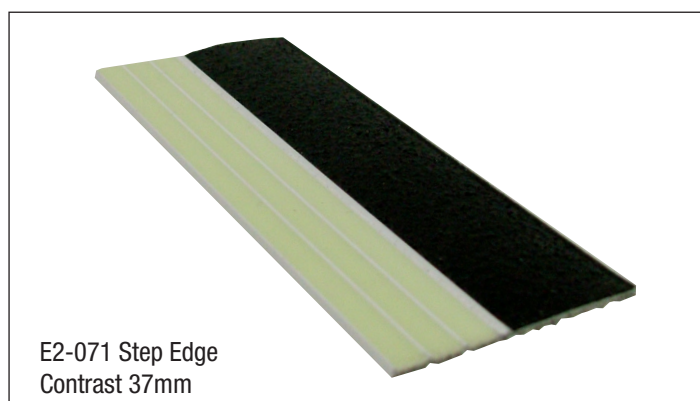


Product Data Sheet - Step Edge Contrast E2-071

2016 V1



The E2-071 Step Edge Contrast is designed to ensure visibility of steps in escape routes to meet NZBC Clause F6 “Visibility in Escape Routes”. The Step Edge contrast will be effective in all light conditions including during failure of the main lighting.

PERFORMANCE

Independently tested in accordance with UL 1994 for 10 metre visibility to meet NZBC Clause F6.

Risk Group C Building

30 minutes visibility
Minimum charging illuminance of 20 lux continuously during occupancy.

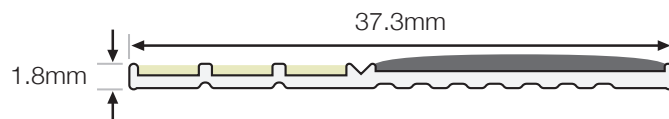
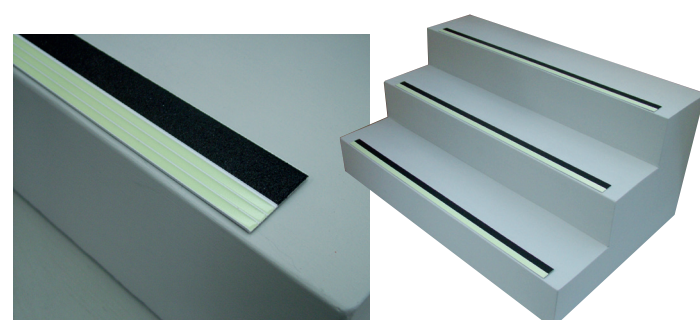
Risk Group B Building

90 minutes visibility
Minimum charging illuminance of 60 lux continuously during occupancy.

Outdoor or daylight installations will absorb enough natural light to be visible throughout the longest winter night.

The Step Edge Contrast is suitable for use indoors and outdoors. The anti-slip material provides all weather protection from slips and falls.

- Anti-Slip Properties - AS/NZS 4586-2004 Classification: FV
- UV Resistance - Loss of luminance after 1000 hrs ASTM G-155 Cycle 1 exposure: <10%: Pass
- Salt Spray Resistance - ASTM B117: Pass
- Washability - ASTM D4828: Pass
- Rate of Burning - ASTM D635: Pass
- Surface Flammability - ASTM E162: Pass
- Toxicity - Bombardier Toxic Gas Generation Test SMP800-C: Pass
- Radioactivity - ASTM D3648: Pass



SUPPLY

The products are available in lengths of 100mm increments from 600mm to 1500mm to comply with IBC recommendations to mark the escape path on the front edge of the step to within 50mm of the wall or the side of the step. Custom lengths can also be fabricated on site or in the factory from 2.45 metre or 3.06 metre lengths.

COMPOSITION

Ecoglo E2-071 Step Edge Contrast is manufactured from extruded 6060T5 aluminium section. Silicon Carbide anti-slip materials and custom made photoluminescent pigment are embedded in thermoset polyester carriers to integrally bond the active ingredients into the aluminium following curing at high temperature. The photoluminescent area is also recessed into protective channels.

INSTALLATION

Indoors the E2-071 Step Edge Contrast can be surface mounted on all smooth surfaces. Outdoors the E2-071 Step Edge Contrast can be surface mounted onto concrete.

Installation is a simple process using polyurethane adhesive.

Maximum recommended length for outdoor installation is 1500mm.

Consult Installation Instructions on website for full details and surface preparation.

Screws can be used if adhesion is difficult.
(See order codes below for the product that best suits).

E2-071 For polyurethane adhesive fixing
E2-071P Punched for screw fixing

PRODUCT CODE	PRODUCT DESCRIPTION	PRODUCT LENGTH
E2-071-600	Step Edge Contrast 37mm	600mm
E2-071-700	Step Edge Contrast 37mm	700mm
E2-071-800	Step Edge Contrast 37mm	800mm
E2-071-900	Step Edge Contrast 37mm	900mm
E2-071-1000	Step Edge Contrast 37mm	1000mm
E2-071-1100	Step Edge Contrast 37mm	1100mm
E2-071-1200	Step Edge Contrast 37mm	1200mm
E2-071-1300	Step Edge Contrast 37mm	1300mm
E2-071-1400	Step Edge Contrast 37mm	1400mm
E2-071-1500	Step Edge Contrast 37mm	1500mm

Contact

Ecoglo International Limited

77 Kingsley St, Sydenham 8023
PO Box 7698, Sydenham 8240, Christchurch, New Zealand
Phone: 03 348 3781 **Fax:** 03 343 6821
Email: info@ecoglo.com **Web:** www.ecoglo.co.nz